

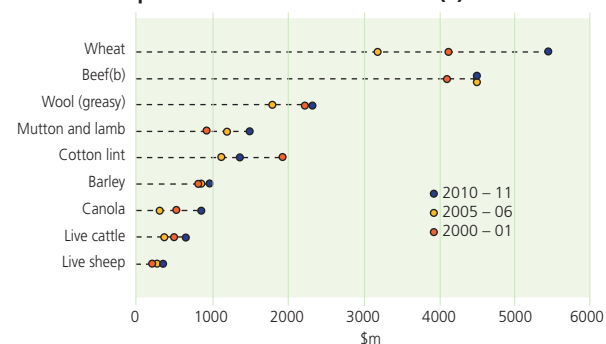
IRRIGATION ACTIVITY

	2001	2006	2011
Agricultural businesses (no.)(a)(b)	140,516	154,681	135,654
Agricultural businesses irrigating (no.)	39,863	44,826	38,752
Area of agricultural land ('000 ha)	455,723	434,925	409,673
Area irrigated ('000 ha)	2,603	2,546	1,963
Volume applied (ML)	na	10,737,364	6,645,375
Application rate (ML/ha)(c)	na	4.2	3.4

- (a) From 2005-06, ABS moved to a new frame. See Notes for details.
 (b) Refers to the total number of businesses that operated during the financial year.
 (c) Averaged across all irrigated pastures and crops.



Value of exports of selected commodities(a)



- (a) Value of exports are on a free on board (f.o.b.) basis.
 (b) Includes veal and buffalo meat.

Source: ABS data available on request, International Trade.

EXPORTS OF SELECTED COMMODITIES(a)

		2001	2006	2011
Crops				
Barley				
Quantity	'000 t	3,577	4,732	3,931
Value	\$m	876	904	996
Canola				
Quantity	'000 t	1,479	884	1,471
Value	\$m	544	331	866
Cotton lint				
Quantity	'000 t	834	650	504
Value	\$m	1,956	1,137	1,367
Rice(b)				
Quantity	'000 t	83	15	29
Value	\$m	40	12	18
Wheat				
Quantity	'000 t	16,394	14,871	18,348
Value	\$m	4,135	3,212	5,482
Livestock				
Live cattle				
Quantity	'000	861	578	805
Value	\$m	498	404	660
Live sheep				
Quantity	'000	6,033	4,251	2,916
Value	\$m	264	297	348
Livestock products				
Beef(c)				
Quantity	'000 t	988	948	981
Value	\$m	4,127	4,539	4,527
Mutton and lamb				
Quantity	'000 t	308	294	259
Value	\$m	951	1,223	1,516
Wool (greasy)				
Quantity	'000 t	470	369	331
Value	\$m	2,259	1,816	2,346

- (a) Value of exports are on a free on board (f.o.b.) basis.
 (b) Excludes milled rice.
 (c) Includes veal and buffalo meat.

Source: ABS data available on request, International Trade.

ACKNOWLEDGEMENTS

Individuals, businesses, governments and other organisations freely provide information on which ABS publications are based. Their continued cooperation is very much appreciated; without it, the wide range of statistics published by the ABS would not be available for general use by the community. Information received by the ABS is treated in strict confidence, as required by the *Census and Statistics Act 1905*.



SYMBOLS AND ABBREVIATIONS USED

ABR	Australian Business Register	na	not available
ABS	Australian Bureau of Statistics	n.e.c.	not elsewhere classified
ACT	Australian Capital Territory	no.	number
EVAO	estimated value of agricultural operations	NT	Northern Territory
f.o.b.	free on board	RSE	relative standard error
ha	hectares	t	tonnes
incl.	including	Tas.	Tasmania
m	million	wt	weight
ML	megalitre	'000	thousands
ML/ha	megalitres per hectare	\$m	million dollars

NOTES

The reference period for 2001, 2006 and 2011 was the year ending 30 June, unless otherwise indicated.

The scope of the 2001, 2006, and 2011 Agricultural Censuses was agricultural businesses with an EVAO of \$5,000 or more.

In 2005-06, the ABS moved to a new frame sourced from the Australian Taxation Office's Australian Business Register (ABR). In addition to the change in frame, there have been changes in methodologies used for determining whether agricultural businesses are 'in scope' of the collection and in some of the ways the data are compiled. The key implication of this strategy is that data from 2005-06 is not exactly comparable with earlier data.

Detailed information on the impact of the change can be found in *Agricultural Commodities, Australia, 2005-06* (cat. no. 7121.0).

FOR MORE INFORMATION

Agricultural Commodities, Australia (cat. no. 7121.0)
Water Use on Australian Farms, Australia (cat. no. 4618.0)
Livestock Products, Australia (cat. no. 7215.0)
Value of Agricultural Commodities Produced (cat. no. 7503.0)

For more general queries regarding the full range of ABS information, please phone **1300 135 070**.
www.abs.gov.au



© COMMONWEALTH OF AUSTRALIA 2012. PRODUCED BY THE AUSTRALIAN BUREAU OF STATISTICS

NUMBER OF BUSINESSES WITH AGRICULTURAL ACTIVITY, BY INDUSTRY(a), at 30 June 2011

Nursery production (under cover)	327
Nursery production (outdoors)	648
Turf growing	283
Floriculture production (under cover)	235
Floriculture production (outdoors)	389
Mushroom growing	92
Vegetable growing (under cover)	756
Vegetable growing (outdoors)	3,440
Grape growing	5,252
Kiwifruit growing	21
Berry fruit growing	456
Apple and pear growing	683
Stone fruit growing	851
Citrus fruit growing	1,125
Olive growing	389
Other fruit and tree nut growing	2,782
Sheep farming (specialised)	11,221
Beef cattle farming (specialised)	38,452
Beef cattle feedlots (specialised)	470
Sheep-beef cattle farming	6,624
Grain-sheep or grain-beef cattle farming	12,108
Rice growing	542
Other grain growing	12,047
Sugar cane growing	3,508
Cotton growing	755
Other crop growing n.e.c.	1,812
Dairy cattle farming	7,562
Poultry farming (meat)	766
Poultry farming (eggs)	340
Deer farming	79
Horse farming	4,856
Pig farming	663
Beekeeping	556
Other livestock farming n.e.c.	713
Total Agriculture	120,806
All other industries	14,641
Total all industries	135,447

(a) Count of agricultural businesses with an EVAO of \$5,000 or more.

LAND USE ON FARMS, at 30 June

		2001	2006	2011
Number of agricultural businesses engaged in agricultural activity(a)	no.	140,516	154,472	135,447
Total area of agricultural businesses	'000 ha	455,723	434,925	409,673
Area of crops(b)	'000 ha	24,520	24,565	32,078
Total area of Australia	'000 ha	769,202	769,202	769,202

(a) Count of agricultural businesses with an EVAO of \$5,000 or more.
(b) Excludes crops harvested for hay and seed, and pastures and grasses.

LIVESTOCK NUMBERS, at 30 June

	2001	2006	2011
	'000	'000	'000
Dairy cattle(a)	3,217	2,788	2,570
Meat cattle and calves	24,504	25,605	25,936
Sheep and lambs	110,928	91,028	73,099
Pigs	2,748	2,733	2,285
Chickens for meat	77,231	78,448	77,633
Chickens for eggs(b)	14,276	15,936	13,111

(a) Excluding house cows.
(b) Including hens in moult.

LIVESTOCK SLAUGHTERINGS AND PRODUCTS

	2001	2006	2011	
Livestock slaughterings (no.)				
Cattle	'000	7,941	7,580	7,369
Calves	'000	1,038	821	729
Sheep	'000	16,628	11,830	5,340
Lambs	'000	18,629	18,666	17,880
Pigs	'000	5,016	5,370	4,643
Chickens(a)	'000	398,869	437,864	549,891
Meat production (carcass weight)				
Beef	'000 t	2,086	2,050	2,089
Veal	'000 t	33	28	44
Mutton	'000 t	348	244	123
Lamb	'000 t	367	382	391
Pig meat	'000 t	365	389	342
Chicken meat (dressed weight)(a)	'000 t	619	773	1,015
Wool receivals	'000 t	590	473	368
Whole milk factory intake(b)	ML	10,546	10,089	9,101

(a) Excludes Tas., NT and ACT. Data for 2001 includes ACT.
(b) Data collection for 2006 and 2011 is based on farm location.

MAJOR CROPS

		2001	2006	2011	
Crops for grain					
Barley	Production	'000 t	6,743	9,482	7,995
	Area	'000 ha	3,454	4,406	3,681
Grain sorghum	Production	'000 t	1,935	1,932	1,935
	Area	'000 ha	758	767	633
Lupins	Production	'000 t	1,055	1,285	808
	Area	'000 ha	1,180	809	756
Oats	Production	'000 t	1,050	1,688	1,128
	Area	'000 ha	650	930	826
Rice	Production	'000 t	1,643	1,003	723
	Area	'000 ha	177	102	76
Wheat	Production	'000 t	22,108	25,150	27,410
	Area	'000 ha	12,141	12,443	13,502
Other crops					
Canola	Production	'000 t	1,775	1,419	2,359
	Area	'000 ha	1,459	972	2,078
Cotton lint	Production	'000 t	666	560	844
	Area	'000 ha	536	327	588
Sugar cane for crushing	Production	'000 t	28,117	37,128	25,182
	Area	'000 ha	403	398	308
Fruit					
Apples	Production	'000 t	325	276	300
	Trees(a)	'000	6,455	8,833	8,859
Bananas	Production	'000 t	358	187	203
	Bearing area	'000 ha	12	11	11
Mangoes	Production	'000 t	37	36	37
	Trees(a)	'000	1,017	1,437	1,416
Oranges	Production	'000 t	550	507	291
	Trees(a)	'000	6,669	6,553	7,466
Pears (incl. Nashi)	Production	'000 t	173	142	123
	Trees(a)	'000	1,785	1,776	1,625
Vegetables					
Carrots	Production	'000 t	321	265	225
	Area	'000 ha	8	6	5
Onions	Production	'000 t	222	222	331
	Area	'000 ha	5	5	6
Potatoes(b)	Production	'000 t	1,302	1,250	1,128
	Area	'000 ha	40	35	32
Tomatoes(b)	Production	'000 t	556	450	302
	Area	'000 ha	10	8	8

(a) Trees of bearing age.
(b) Includes Processing and Fresh Market.

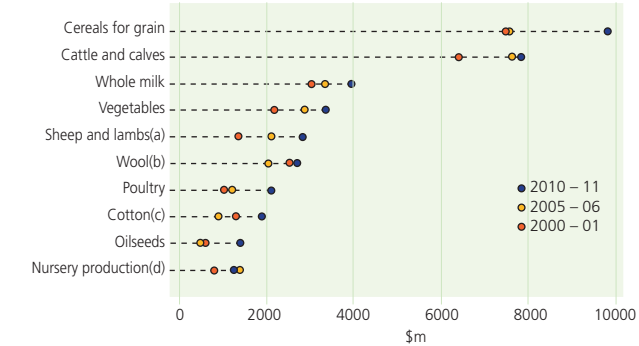
GROSS VALUE OF AGRICULTURAL COMMODITIES PRODUCED

	2001	2006	2011
	\$m	\$m	\$m
Crops			
Cereals for grain	7,494	7,594	9,845
Cotton(a)	1,305	933	1,902
Legumes for grain	583	658	953
Grapes	1,517	1,377	1,013
Nursery production(b)	795	1,418	1,263
Oilseeds	595	528	1,328
Sugar cane cut for crushing	657	1,032	950
Vegetables	2,183	2,878	3,338
Total crops	18,534	20,797	25,048
Livestock slaughterings and other disposals			
Cattle and calves	6,431	7,685	7,824
Sheep and lambs(c)	1,402	2,112	2,862
Pigs	822	890	919
Poultry	1,060	1,223	2,077
Other livestock	23	49	12
Total livestock slaughterings and other disposals	9,738	11,960	13,795
Livestock products			
Wool(d)	2,541	2,054	2,673
Whole milk	3,053	3,341	3,932
Eggs	333	376	572
Total livestock products(e)	5,965	5,771	7,177
Total agriculture	34,237	38,527	46,020

(a) Includes value of cotton lint and cotton seed.
(b) Includes nurseries, cut flowers and cultivated turf.
(c) Excludes value of wool on skins.
(d) Includes value of dead wool and wool on skins.
(e) Data for 2001 includes gross value of honey and beeswax while data for 2006 and 2011 excludes them.



Gross value of agricultural commodities produced



(a) Excludes value of wool on skins.
(b) Includes value of dead wool and wool on skins.
(c) Includes value of cotton lint and cotton seed.
(d) Includes nurseries, cut flowers and cultivated turf.

